

# The Phoenix Turkey Tag ~ \$1450

**IF YOU HAVE SKY, YOU HAVE COVERAGE**



- ▶ 110 grams
- ▶ No External Antennas
- ▶ Internal 56-Channel GPS Engine; Uplink via Globalstar Satellite System
- ▶ **Truly Real-Time Data From Field To Web**
- ▶ Field Downloadable & Reprogramable Without Recapture Via Bluetooth link
- ▶ Temperature and Accelerometer included
- ▶ Geofences Available

### LOGGING SPECIFICATIONS

GPS fixes per day: 1 to 24  
 Memory: 16 MB

### UPLINK TRANSMIT SPECIFICATIONS

Frequency: 1611.25 MHz (Channel A)  
 1616.25 MHz (Channel C)  
 Frequency Select: Automatic (from GPS location)  
 Power: 18 dBm, ±2 dB

### GPS RECEIVER SPECIFICATIONS

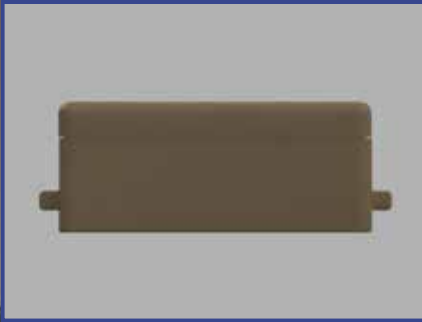
Receiver Type: 56-Channel, u-Blox 7 engine  
 Datum: WGS84  
 Receiver Accuracy: 2.5 m CEP  
 Antenna: Dual band F flat patch

### GENERAL SPECIFICATIONS

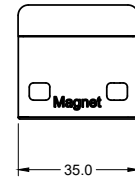
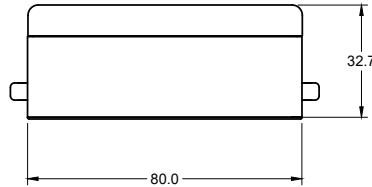
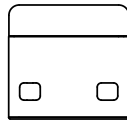
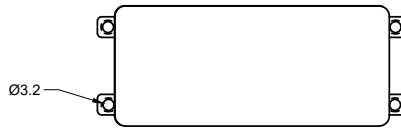
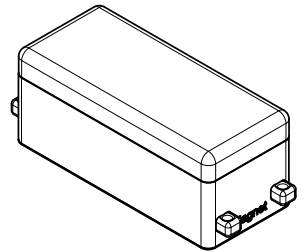
Weight: 110 grams  
 Dimensions: 8cm length x 3.5cm width x 3.3cm height  
 Material: glass-filled nylon  
 Battery: Four 2/3AA Lithium Cells  
 Operating Temperature: -40°C to +50°C

Primarl Lithium Battery • No External Antenna • Nitrogen Filled Enclosure





Notes:  
 Unit to be painted dark brown in color or similar color to blend in with turkey  
 feathers:  
 Rust-Oleum 2X ULTRA COVER SATIN SPRAY in either Nutmeg or Espresso



PROJECT				
GlobalStar IoT				
TITLE				
PA Turkey 7-2022				
APPROVED T.Rhea	SIZE	CODE	DWG NO	REV
CHECKED T. Hill	B	07FD4	IoT_Pri_cell_110G	1
DRAWN Tim Rhea	7/18/2022	SCALE 1:1	WEIGHT 110 grams	SHEET 1/1

